

Shipping Preparation

When to schedule your shipment

- Ship your samples on the same day as collection. If you cannot ship your samples the same day you complete the collection, such as over a weekend or holiday, please keep all tubes in the freezer along with the freezer brick until you are ready to ship. Your samples must be shipped to us within 48 hours of collection. Failure to do this may result in you having to recollect.

Return frozen

- 1 x Blue-top Amber tube
- 1 x Green-top preservative tube
- 1 x Green-top urine tube
- 1 x Blue-top urine tube

When you are ready to ship

- Ensure that you have provided the following information:
 - Personal Information Form: make sure the form is completed.
 - Pro-forma Invoices: fill out the supplied invoices (**only required if you are shipping from a non-EU country**).
- Prepare your shipment:
 - Retrieve the bio-hazard bag containing your urine samples and the freezer brick from the freezer.
 - Place the frozen freezer brick in the bottom of the foam insulator box, then place the bio-hazard bag containing your frozen samples on top of this, along with the completed Personal Information Form.
 - Place the foam insulator box into the supplied box, place the box in the DHL bag and ship (see Shipping Instruction).



Nordic Laboratories

Metabolomix

ENG

Welcome To Your Test Kit

You have chosen to do a Metabolomix Test from Nordic Laboratories which will provide information to help you on your personal health journey.

The future of medicine lies in a personalised treatment strategy, based on information relating to your individual biochemistry and genetic inheritance. This test will help you obtain objective data about yourself to aid in the development of a more precise treatment strategy and enable measures to be implemented that will help you attain a higher level of health.

In this kit you will find all the material needed for your collection. Please read the instructions carefully and follow them step by step. Your test results will be released to your practitioner approximately three weeks after we have received your sample.

If you have any questions, concerns, or need support in understanding the test and instructions, please call our support team on +45 33 75 10 00 or email info@nordic-labs.com.

Check Your Kit

Shipping Materials

- 1 x Box containing the collection kit (**keep box for returning your samples**)
- 1 x Foam insulator box (**keep box for returning your samples**)
- 1 x Freezer brick
- 1 x Personal Information Form
- 1 x Shipping Instruction
- 1 x DHL bag
- 1 x DHL shipment waybill
- 2 x Pro-forma Invoices (**only included if you are shipping from a non-EU country**)

Collection Materials

- 1 x Blue-top amber tube
- 1 x Green-top preservative tube
- 1 x Green-top urine tube
- 1 x Blue-top urine tube
- 1 x Disposable pipette
- 1 x Bio-hazard bag with absorbent pad
- 2 x Plastic cups with lids
- 4 x Collection labels

Please note: if the collection instructions are not followed carefully, it may lead to delay in the results or recollection.



Nordic Laboratories

Nygade 6, 3.sal • 1164 Copenhagen K • Denmark • Tlf: +45 33 75 10 00

info@nordic-labs.com • www.nordic-labs.com

© Copyright 2020 Nordic Laboratories. Reproduction may be made for personal use only. Systematic electronic or print reproduction and distribution including duplication of any material in this paper for a fee or for commercial purposes, or modification of the content of the paper are prohibited.

If any items are missing or expired, please call +44 (0)15 80 20 16 87 or email testkits@nordicgroup.eu.

Preparation

Provide the following information

- Personal Information Form: verify that the information on the form is correct and edit if needed.

When to schedule your collection

- Your urine samples should be collected in the morning, unless you wake up at night to urinate (see Collection Procedure) and must be shipped within 24 hours of collection.

2 days before testing

- Discontinue all of the following (unless instructed otherwise by your physician):
 - Supplements containing creatine, vitamin C or any mineral elements measured on this test.
 - Other substances that may influence urinary element excretion of elements.
 - Seafood (unless asked to continue by your healthcare provider).
 - Continue with the above food restrictions until you have completed this test.

24 hours before testing

- Place your freezer brick in the freezer for a minimum of 8 hours before shipping.
- You should eat your usual diet. Avoid over-consuming any single food or extreme diets.
- Fluid intake should be limited to eight 8-ounce (227ml) glasses of fluid over a 24-hour period.

Important Information

- Females should not collect during a menstrual period.
- Please note, patients may not be treated with provocation agent for purposes of testing.
- Be aware that some of the tubes contain preservatives. Do Not Rinse. Avoid contact of the skin and eyes with the fluid in the vials. For eye contact, flush with water thoroughly for 15 minutes.
- For skin contact, wash thoroughly with soap and water. For accidental ingestion, contact a physician immediately.
- Testing is not available for patients under two years old.
- Never discontinue prescription medications without first consulting your physician.

Collection Procedure



Step 1:

Write your name, date of birth, and collection date on all four collection labels and stick to each tube.



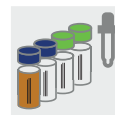
Step 2:

On the Personal Information Form, verify that the information is correct and edit if needed. Please ensure that you note the date and time of your urine collection.



Step 3:

After waking for the day, collect your first morning urine (FMV) into one of the plastic cups with lids. Fill the cup to $\frac{3}{4}$ full and then pass any additional urine into the toilet. (Note: If you wake up to urinate during the night within six hours of your rising time, collect your urine into the other plastic cup with lid – fill to $\frac{3}{4}$ full and then pass any additional urine into the toilet. Place lid on the cup and keep in the refrigerator until the morning. Mix the two urine collections back and forth between the two cups to achieve a uniform mixture).



Step 4:

Use the pipette to transfer urine from one of the plastic cups into the green-top preservative tube, blue-top amber tube, green-top urine tube and the blue-top urine tube until all four are nearly full.



Step 5:

Screw the caps onto the tubes tightly and shake the tubes to mix thoroughly.



Step 5:

Place the tubes into the bio-hazard bag and freeze for a minimum of two hours prior to shipping.